



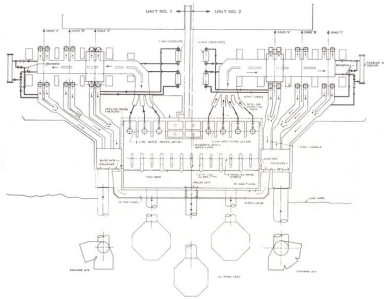
Capabilities

Total Maximum Daily Load (TMDL) studies

Mixing zone and waste-load allocation (WLA) studies

Statistical modeling

Water quality modeling



Clients

U.S. EPA

Michigan DEQ

Municipal Wastewater Dischargers

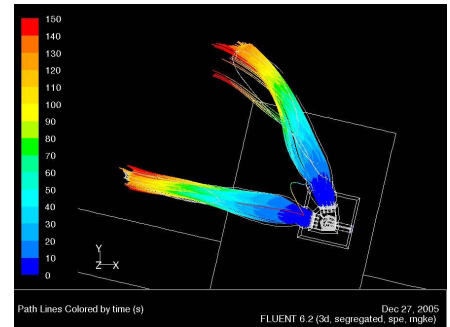
Power Generation Utilities

Lake Associations

Industry Research Organizations

GLEC environmental engineers conduct engineering studies for a wide range of environmental applications, including:

- Regulatory and cost-benefit analysis
- Technical guidance for water quality standards development and implementation
- Sampling designs for mass balance, eutrophication, and bioaccumulation studies
- Total maximum daily load (TMDL) studies
- Mixing zone and waste-load allocation (WLA) studies
- Contaminant trackdown
- Sediment trap sampling
- Chemical and nutrient loading estimation
- Statistical analysis of censored and otherwise badly-behaved data
- Statistical modeling
- Water quality modeling
- Impacts of climate change on aquatic resources



Our experience working with both regulatory agencies and the regulated community enables GLEC to solve problems using a broad array of technical approaches.

Contact: Doug Endicott, Environmental Engineer
dendicott@glec.com

www.glec.com
231-941-2230