



## Capabilities

*Regulatory Agency Interaction*

*NEPA Environmental Assessments and Environmental Impact Statements*

*Aquatic/Terrestrial Habitat Assessments*

*Endangered/Threatened Species Surveys*

*Rapid Bioassessment Protocols*

*Botany and Soil Sciences*

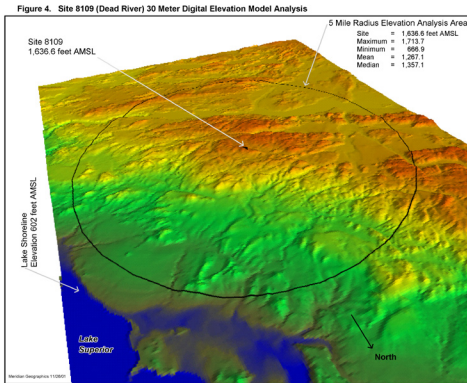
*Wetland/Watershed Delineation*

*Recreational Surveys*

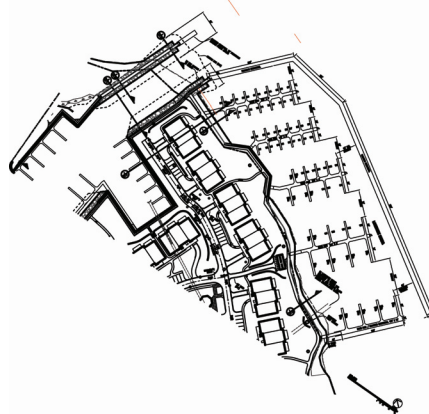
*Technical Report Preparation*

Planned activities or actions by federal, state, or local governments often require environmental evaluations or impact statements that follow specific protocols. Government construction projects may require a National Environmental Policy Act (NEPA) Environmental Assessment (EA) or more detailed Environmental Impact Statement (EIS). A state regulatory agency may require a federal installation to meet certain environmental permitting requirements. In cases like these, GLEC offers government agencies a strong combination of scientific expertise, credibility with regulatory agencies, and experience converting research results into conclusive reports.

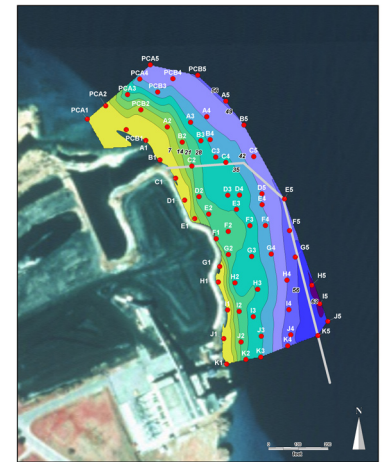
GLEC has the capability and field resources to conduct biological and ecological surveys of aquatic, wetland, and terrestrial ecosystems in support of general environmental evaluations and NEPA EISs. GLEC staff are experts in aquatic ecology, wetland ecology, vertebrate and invertebrate biology, aquatic toxicology, environmental chemistry, botany, biogeography, and habitat assessment. GLEC researchers have extensive experience interpreting the regulatory requirements of the U.S. Environmental Protection Agency, U.S. Fish and Wildlife Service, and various state agencies as they relate to the NEPA process.



Communications Tower Impact on Avian Flyways



Ecological Impact of Marina Construction



## Clients

*U.S. Army*

*Michigan Department of Public Safety*

*County Governments*

Contact: Dennis McCauley, Senior Operations Manager  
[dmccauley@glec.com](mailto:dmccauley@glec.com)

[www.glec.com](http://www.glec.com)  
231-941-2230