

Capabilities

Biological Surveys

Field Sample Collection

Multiple Identification Protocols

Genus Level Identification



Clients

U.S. Environmental Protection Agency

U.S. Department of Defense

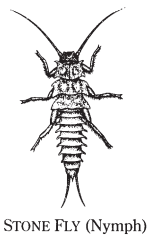
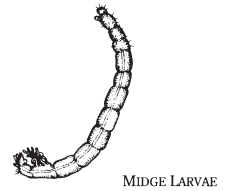
Michigan Department of Environmental Quality

State of Delaware

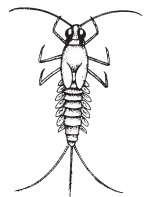
Little Traverse Band of Ottawa and

Benthic and aquatic invertebrates are increasingly used as indicators in various biomonitoring and ecological assessment programs. GLEC's benthic team has been collecting, sorting and identifying benthic organisms as part of various water quality studies for over sixteen years. We have processed over 4,000 benthic samples during that time period using a variety of sorting and identification protocols. GLEC's taxonomists have over 35 years of combined experience and are certified under the taxonomic certification program sponsored by the North American Benthological Society (NABS). GLEC's benthic laboratory in Traverse City, Michigan has a full complement of precision analysis and support equipment including:

- Zeiss ICM 405 compound microscope
- Wild M8 dissecting microscopes
- Bausch & Lomb dissecting scope
- Illuminated magnifiers
- Large library of taxonomic keys and descriptions
- Extensive reference collection including Chironamidae
- Gridded pan, sieves, forceps, and other sample processing equipment
- Field sample collection equipment: D-nets, Hess samplers, Hester-Dendy samplers, dredge samplers



STONE FLY (Nymph)



MAYFLY (Nymph)



Contact: *Don McNew, Taxonomist*
dmcnew@glec.com

www.glec.com
 231-941-2230